

Enter Sandman

Written by bluesever

Friday, 11 November 2011 20:05 - Last Updated Monday, 16 March 2015 17:37

Enter Sandman

Here's what Michael Bonner, the Yankees' senior director of scoreboard and broadcasting said of the song "Enter Sandman".. *But once Rivera is no longer closing games for the Yankees, Bonner said, the song will be retired at Yankee Stadium along with him.*

The opening chords of Metallica's "Enter Sandman" blare over the Yankee Stadium sound system, and by the time the drums kick in 15 seconds later, everyone in the building knows what is about to happen. Mariano Rivera's theatrical entrance is one of the most recognizable in all of professional sports, but as the Yankees' closer approaches the all-time saves mark, he admits he doesn't even listen to the song.

Enter Sandman

"**Enter Sandman**" is a song by American thrash metal band **Metallica**, featured as the opening track and lead single from their eponymous 1991 album. The music was written by

Kirk Hammett, James Hetfield

and

Lars Ulrich.

Vocalist and rhythm guitarist Hetfield wrote the lyrics.



Mariano Rivera - Enter Sandman

Enter Sandman

Written by bluesever

Friday, 11 November 2011 20:05 - Last Updated Monday, 16 March 2015 17:37

Guitarist **Kirk Hammett** told *Rolling Stone* magazine how he wrote this song's memorable riff: *"Soundgarden had just put out Louder Than Love. I was trying to capture their attitude toward big, heavy riffs. It was two o'clock in the morning. I put it on tape and didn't think about it. When [drummer] Lars [Ulrich] heard the riff, he said, 'That's really great. But repeat the first part four times.' It was that suggestion that made it even more hooky."*



Kirk Hammett

According to engineer Randy Staub, the drum track was composed of nearly 50 takes because drummer **Lars Ulrich** recorded each section of the song separately in order to maintain the intensity. Supposedly a combination of 40 to 50 microphones were used in recording the drums and guitars to simulate the sound of a live concert.



Enter Sandman

Written by bluesever

Friday, 11 November 2011 20:05 - Last Updated Monday, 16 March 2015 17:37

Lars Ulrich

Hammett told *Kerrang!* September 13, 2008 about the song's guitar solo: *"A lot of people can probably hum this one note perfect, but aside from the fact that it's an insanely popular song I think the solo is amazing in its own right. It fits in perfectly and adds a different dimension to the music."*



Metallica

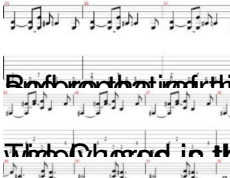
The instrumental parts of the song were quickly finished, but Hetfield did not come up with vocal melodies and lyrics for a long time. The song was among the album's last to have lyrics, and the lyrics featured in the song are not the original; Hetfield felt that "Enter Sandman" sounded *"catchy and kind of commercial"*

and so to counterbalance the sound, he wrote lyrics about *"destroy[ing] the perfect family; a huge horrible secret in a family"* that included references to crib death.

Enter Sandman

Written by bluesever

Friday, 11 November 2011 20:05 - Last Updated Monday, 16 March 2015 17:37



the song is a tribute to the style of the 1970s, and the lyrics are a nod to the classic rock of the 1970s.

The song is a tribute to the style of the 1970s, and the lyrics are a nod to the classic rock of the 1970s.

The song is a tribute to the style of the 1970s, and the lyrics are a nod to the classic rock of the 1970s.

The song is a tribute to the style of the 1970s, and the lyrics are a nod to the classic rock of the 1970s.

The song is a tribute to the style of the 1970s, and the lyrics are a nod to the classic rock of the 1970s.

The song is a tribute to the style of the 1970s, and the lyrics are a nod to the classic rock of the 1970s.

The song is a tribute to the style of the 1970s, and the lyrics are a nod to the classic rock of the 1970s.

The song is a tribute to the style of the 1970s, and the lyrics are a nod to the classic rock of the 1970s.

The song is a tribute to the style of the 1970s, and the lyrics are a nod to the classic rock of the 1970s.

The song is a tribute to the style of the 1970s, and the lyrics are a nod to the classic rock of the 1970s.

Enter Sandman

Written by bluesever

Friday, 11 November 2011 20:05 - Last Updated Monday, 16 March 2015 17:37



Enter Sandman